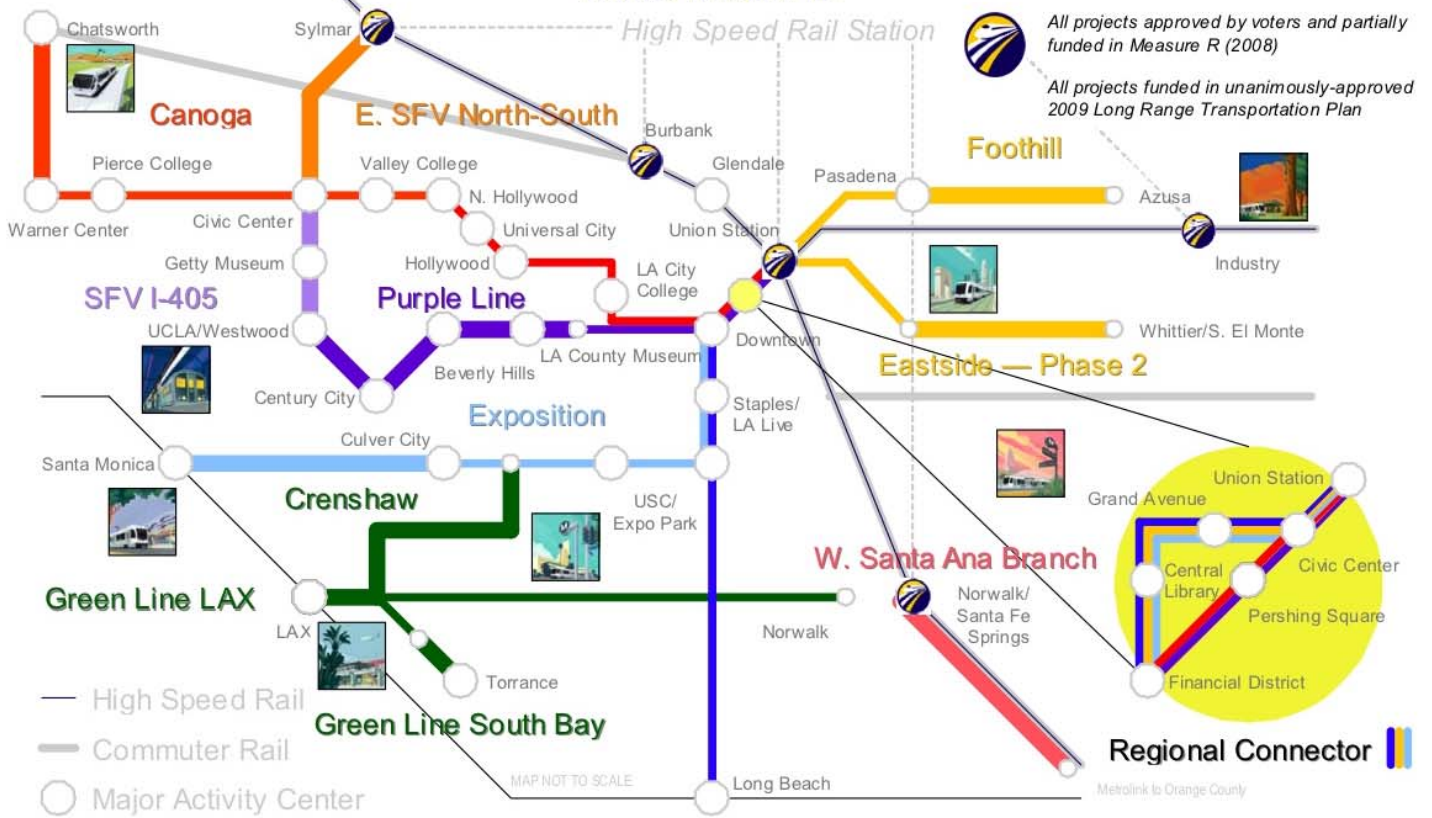
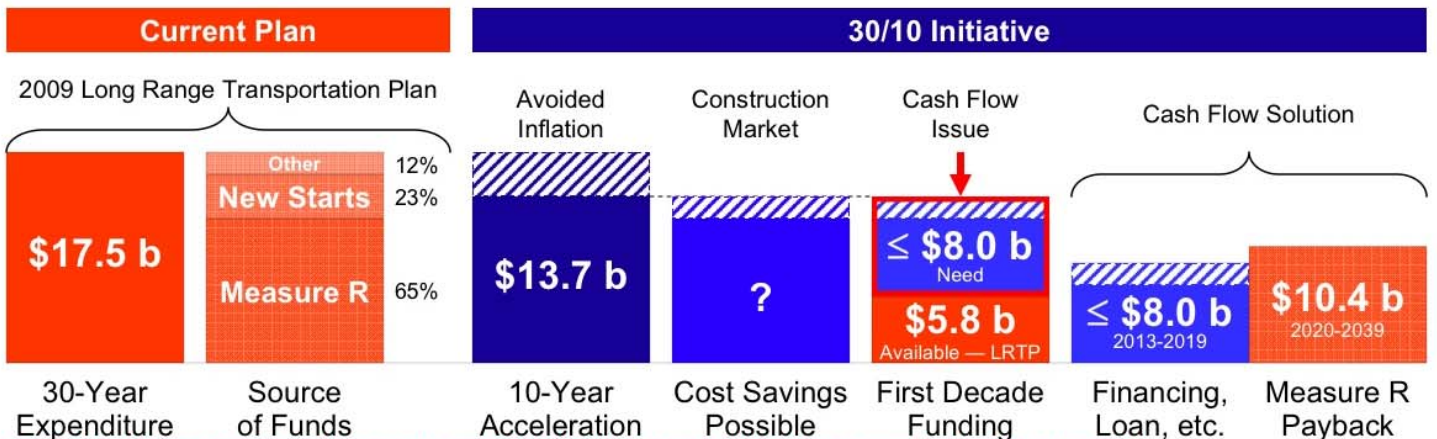
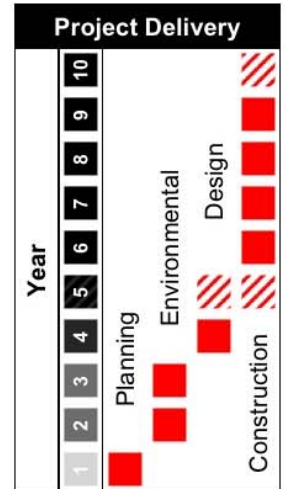


30/10 Initiative

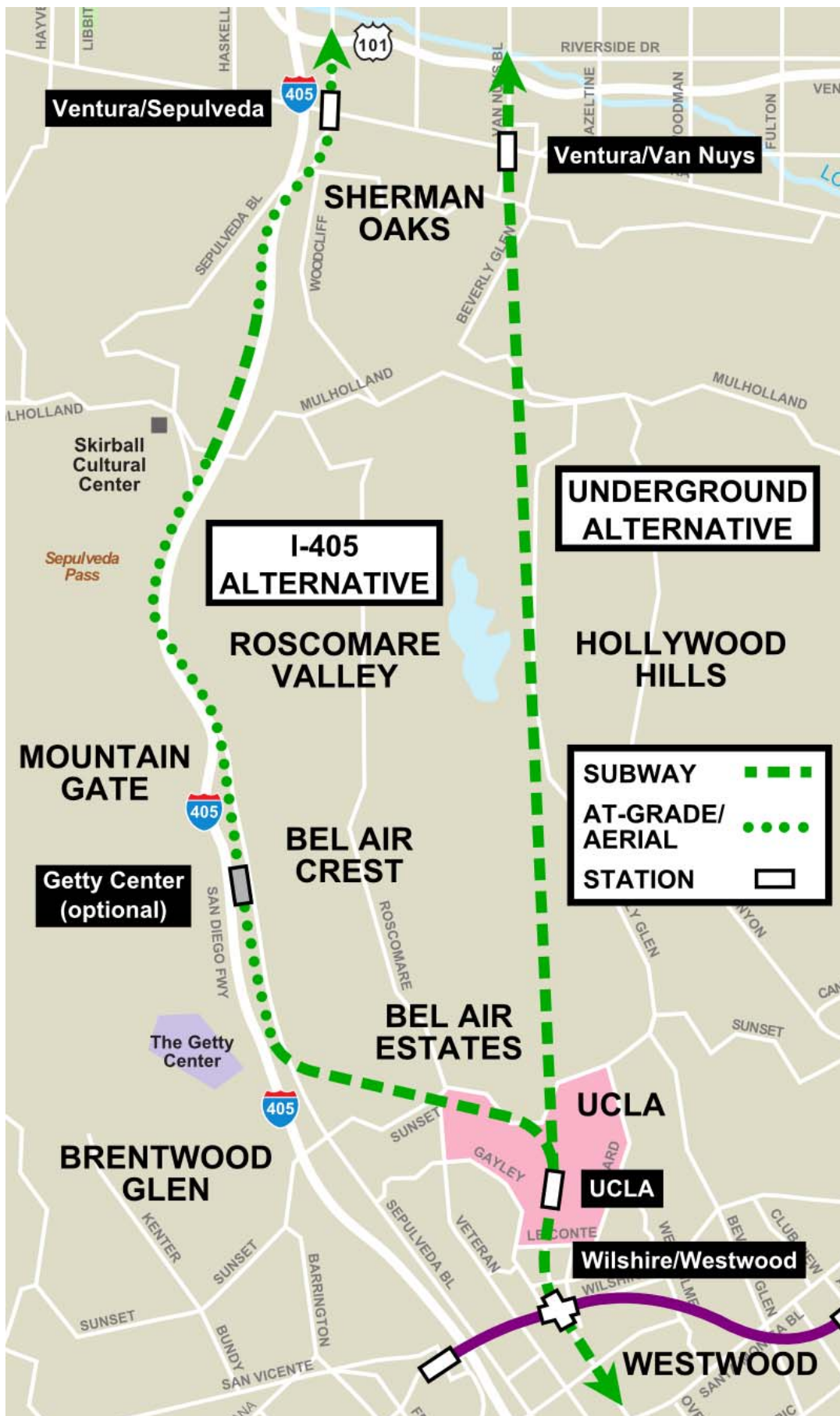


Note: Gold Line Foothill (Azusa) accelerated by MTA Board (03/25/10)

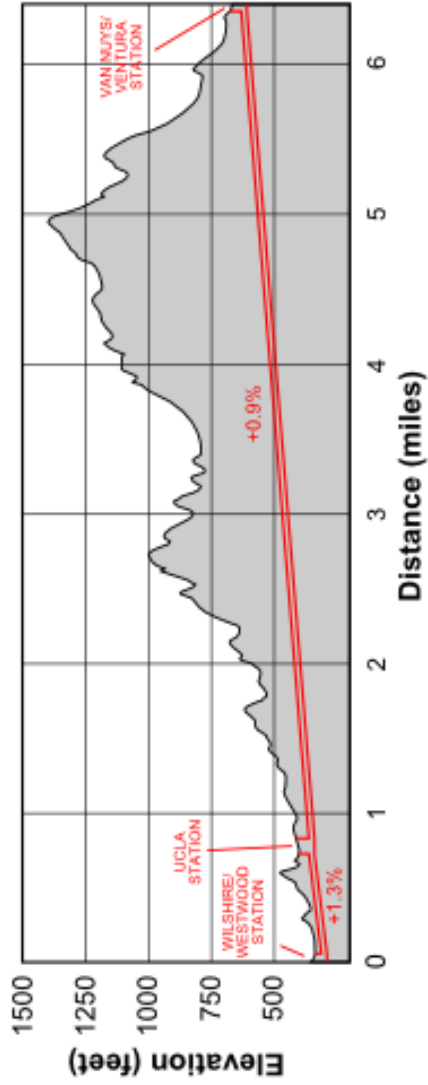
Project	Status	Year Opens Current Plan	Year Opens "30/10"
SFV North-South (Canoga)	Construction	2013	2013
Exposition - Phase 2	Environmental	2015	2015
Gold Line Foothill (Azusa)	Start constr. Jun. 10	2017-2014	2014
Crenshaw	Environmental	2018	2016
SFV East North-South	Planning	2018	2018
Regional Connector	Environmental	2019	2017
Westside Subway (Purple Line)	Environmental	2019, 26, 36	2017
West Santa Ana Branch	----	2027	2018
Green Line - LAX	----	2028	2018
Eastside - Phase 2	Environmental	2035	2017
Green Line - South Bay	Environmental	2035	2018
SFV I-405	----	2039	2018



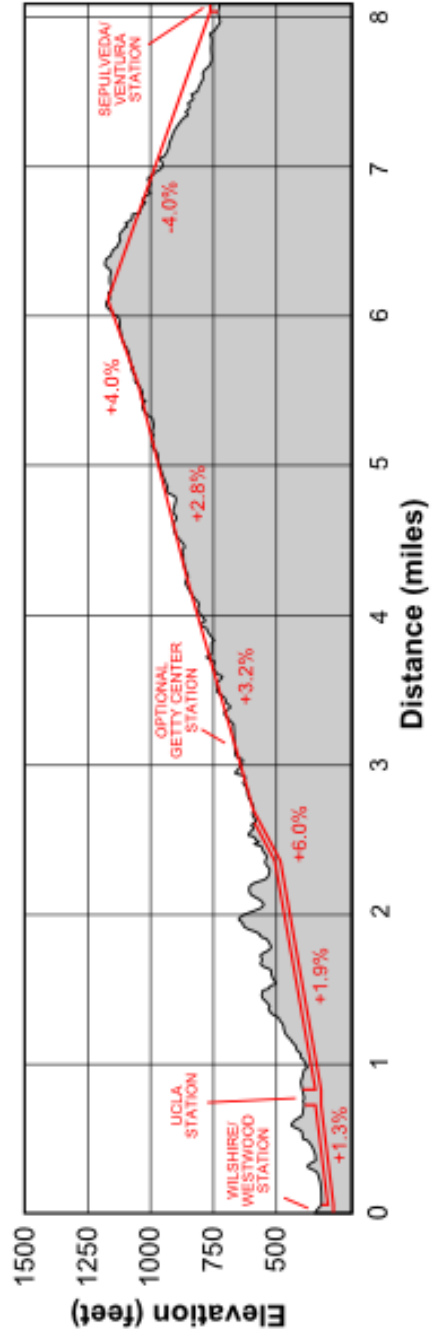
Note: Cost and savings figures have been updated since 03/08/10 draft, reducing both the total program cost and cash flow need



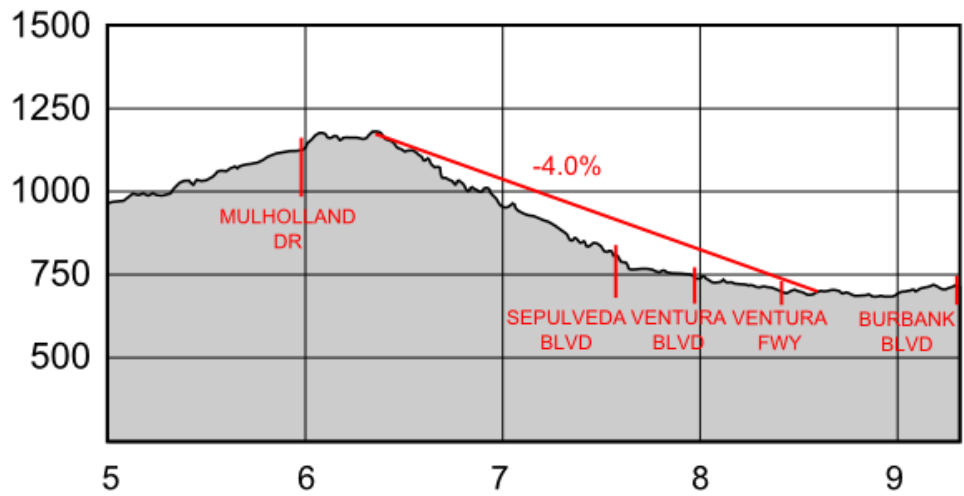
SUBWAY ALTERNATIVE



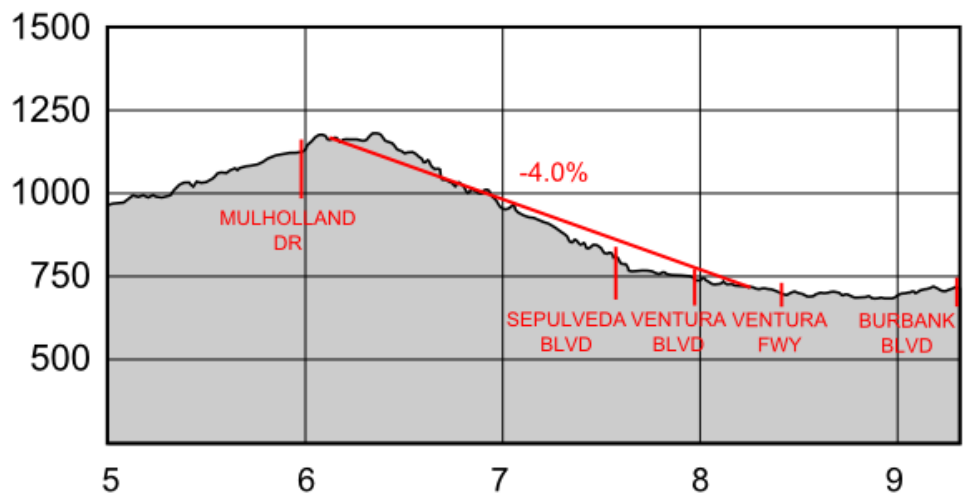
I-405 ALTERNATIVE



ALL-AERIAL



AERIAL-SUBWAY



ALL-SUBWAY

